



REGIONAL SPECIALISED METEOROLOGICAL CENTRE -TROPICAL CYCLONES, NEW DELHI TROPICAL WEATHER OUTLOOK

DEMS-RSMC TROPICAL CYCLONES NEW DELHI DATED 15.06.2025

TROPICAL WEATHER OUTLOOK FOR THE NORTH INDIAN OCEAN (THE BAY OF BENGAL AND THE ARABIAN SEA) VALID FOR THE NEXT 168 HOURS ISSUED AT 0600 UTC OF 15.06.2025 BASED ON 0300 UTC OF 15.06.2025.

BAY OF BENGAL:

Yesterday's upper air cyclonic circulation over westcentral Bay of Bengal off north coastal Andhra Pradesh has merged with the upper air cyclonic circulation over Northwest Bay of Bengal & neighbourhood between 3.1 & 7.6 km above mean sea level tilting southwestwards with height at 0300 UTC of today's, 15th June, 2025.

Scattered to broken low and medium clouds with embedded intense to very intense convection lay over north & central Bay of Bengal and north Andaman Sea. Scattered to broken low and medium clouds with embedded moderate to intense convection lay over south Bay of Bengal and south Andaman Sea.

*PROBABILITY OF CYCLOGENESIS (FORMATION OF DEPRESSION) DURING NEXT 168 HRS:

24 HOURS	24-48 HOURS	48-72 HOURS	72-96 HOURS	96-120 HOURS	120-144 HOURS	144-168 HOURS
NIL	NIL	NIL	NIL	NIL	NIL	NIL

*NOTE: EVERY 24HR FORECAST IS VALID UPTO 0300 UTC (0830 IST) OF NEXT DAY

ARABIAN SEA:

Scattered to broken low and medium clouds with embedded intense to very intense convection lay over eastcentral & southeast Arabian Sea off Maharashtra – Goa – Karnataka – Kerala coasts, Lakshadweep Islands area & Maldives area, Gulf of Cambay and Gulf of Kutch. Scattered low and medium clouds with embedded moderate to intense convection lay over southwest Arabian Sea & Comorin area.

*PROBABILITY OF CYCLOGENESIS (FORMATION OF DEPRESSION) DURING NEXT 168 HRS:

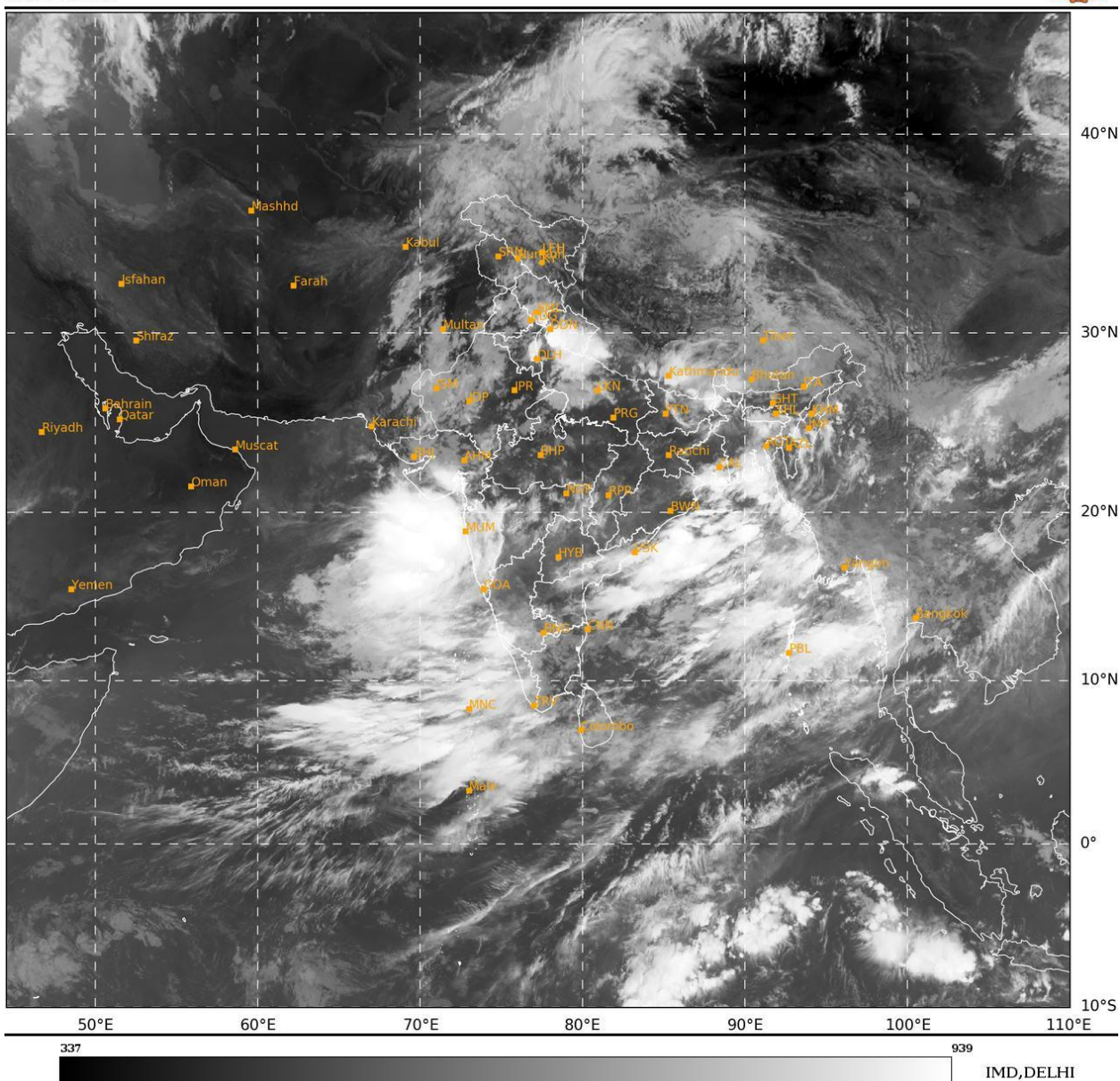
24 HOURS	24-48 HOURS	48-72 HOURS	72-96 HOURS	96-120 HOURS	120-144 HOURS	144-168 HOURS
NIL	NIL	NIL	NIL	NIL	NIL	NIL

*NOTE: EVERY 24HR FORECAST IS VALID UPTO 0300 UTC (0830 IST) OF NEXT DAY

REMARKS: NIL

SAT : INSAT-3DR IMG
 IMG_TIR1 10.8 um
 L1C Mercator

15-06-2025/(0315 to 0342) GMT
 15-06-2025/(0845 to 0912) IST



Cloud distribution: (a) Isolated: <25%, Scattered:25-50%, Broken: 51-75%, Solid:>75%, Convection Intensity: (a) Weak: Cloud Top Temperature(CTT)>-25°C,(b)Moderate:CTT:-25°Cto-40°C,(c)Intense:CTT: -41°Cto -70°Cand(d)Very Intense::Less than -70°C
 PROBABILITYOFCYCLOGENESIS(FORMATIONOFDEPRESSION):NIL:0%,LOW:1-33%,MODERATE:34-66%ANDHIGH:67-100%
 ThisisaguidanceBulletinforWMO/ESCAPPanelMembercountries.VisitrespectiveNationalwebsitesforCountryspecificBulletins